

FloCheck ICD System Accessories

Inner-String-Free Deployment Inflow Control Devices

Tendeka's FloCheck Inflow Control Device (ICD) System Accessories are designed to allow inner string free deployment of completions within horizontal wells.

Tendeka FloCheck Valve

The FloCheck valve enables fluid pump through eliminating the requirement of an inner string. In production mode, the check valve opens and allows the nozzle to produce like a conventional ICD.

FloCheck Ball Seat Sub

The FloCheck Ball Seat Sub is used on the bottom of screen assemblies to allow for setting of liner hanger packers when FloCheck valves are used.

It accommodates a light-weight setting ball that is forced on to the seat when pressure is applied. The thermoplastic ball is plastically deformed and locked on to the seat due to its elastic properties.

FloCheck Check-Valve Guide Shoe

The FloCheck Check-Valve Guide Shoe is used on the bottom of screen assemblies to allow for circulation when required during installation. The shoe incorporates the state-of-the-art float valve technology using valves similar to the type used in drill pipe floats. They provide the most reliable seals with long circulation time in debris laden environments.

Available in both single and double valve arrangement.

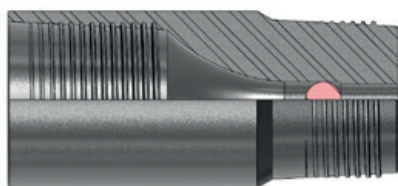
Features

- Annular barrier for Inflow Control Devices (ICD)
- Allow for circulation to bottom without inner string
- Allow for setting mechanical packers and liner hanger packers without inner string

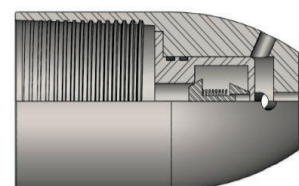
Benefits

- Allow for spotting of breakers and spacers prior to pulling out
- Fluid loss control during completion installation
- Full pressure integrity up to 7500psi for pressure testing completion string
- Pump through capabilities eliminates requirement for inner string

Technical Specifications	FloCheck Valve
Material - Body	Inconel 718
Material - ICD	High Grade Tungsten Carbide
Ball	PA-6
Cage	316L



FloCheck Ball Seat Sub



FloCheck Check-Valve Guide Shoe

