

# FloMatik Select SSD

## Sliding Side Door

FloMatik Select is designed to enable selective flow into the production wellbore.

The FloMatik Select SSD is designed to enable selective flow into the production wellbore. Tendeka's FloMatik Select SSD device and Open Hole Packers can be used in conjunction with sand screens to compartmentalise sections of the open hole to promote an even flow performance. Located underneath the debris filter of the screen are up to 6 orifices which give unimpeded access to flow, enhancing oil recovery.

FloMatik Select can also be deployed in an open or closed orientation, and is able to be selectively and optionally manipulated open.

Tendeka's designs include a viton rubber sealing system, and a non-elastomeric sealing solution. Both are incorporated on to a 'B' profile sliding sleeve arrangement, ensuring full pressure integrity at all times following multiple shifting actions.

FloMatik Select SSD has the flexibility to be used in either sandstone or carbonate reservoirs, making it the ideal solution to enable selective flow in the well.

### Features

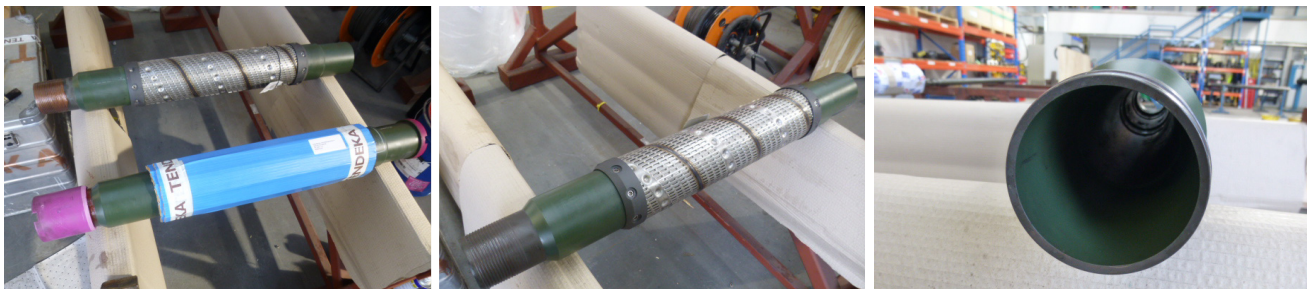
- Standard Otis B profiles to allow for selective open/close
- Robust and reliable non-elastomeric sealing system
- Proven wear resistance

### Benefits

- Selective inflow into wellbore
- Full pressure integrity
- Can be used in sandstone or carbonate reservoirs

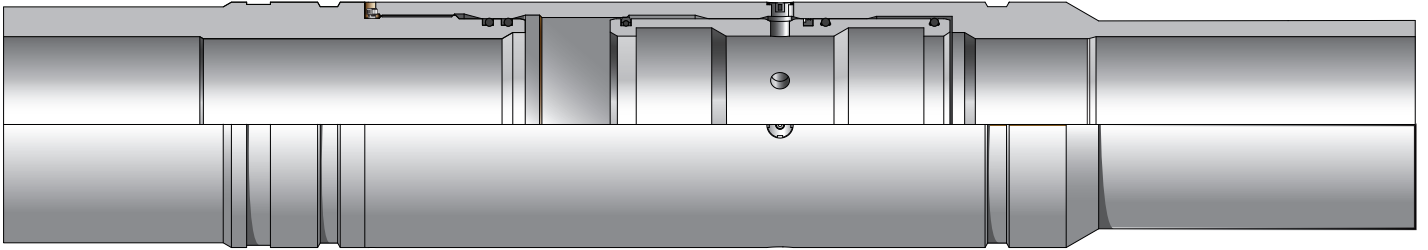
### Technical Specifications

FloMatik Select SSD				FloMatik Select SSD with Sand Screen			
Nominal Size	Max OD	ID	Shifting Profile	Nominal Size	Max OD	ID	Shifting Profile
3.5"	4.25"	2.81"	2.81" Otis B Style	3.5"	4.99"	2.81"	2.81" Otis B Style
4.5"	5.25"	3.80"	3.81" Otis B Style	4.5"	5.95"	3.80"	3.81" Otis B Style
5.5"	6.50"	4.56"	4.56" Otis B Style	5.5"	7.30"	4.56"	4.56" Otis B Style
6.625"	7.44"	5.75"	5.75" Otis B Style	6.625"	8.12"	5.75"	5.75" Otis B Style





FloMatik Select SSD (with ICD)



FloMatik Select SSD with Sand Screen (sliding sleeve)

